

## **Then and Now**

### **The Changing Urban Fabric of Brentford**

Change and adaptation has always been, is, and always will be an essential part of urban change. However Brentford is marked by the unusual rapidity and scale with which the town has lost many parts of its rich built heritage. This has come about as the result of demolition and redevelopment, relocation, theft, looting and vandalism.

Brentford's industrial past has not been shown due respect. This goes back to at least the 1880s when trees were planted on the Ait to shield Royal eyes from the gas works. It has been looked down upon, undervalued, something dirty on posh heels. This has chipped away at Brentford's confidence, and reduced its ability to fight back. Brentford's past must be revalued, done with a different eye, and shown the respect it has been denied for more than a century.

Our built heritage is an essential part of our social and industrial history and it also has a tangible economic benefit.

We make no judgement on the architectural merits of the structures, either then or now, shown in the photographs. One person's carbuncle can often be another's masterpiece.

## The Vestry Hall, Half Acre

**Then** (circa 1910)  
Demolished 1963



**Now**  
(built circa 1964-65)



## Adelaide Road/Adelaide Terrace

**Then** (circa 1910)



**Now**



## The Firestone Factory, Great West Road

**Then** (1950s)



**Now**



## St. Lawrence's Church

**Then** (circa 1910)



**Now**



## St. Lawrence's Churchyard

**Then** (early 1900s)



**Now**



## The High Street and the Magpie and Crown

**Then** (1905)

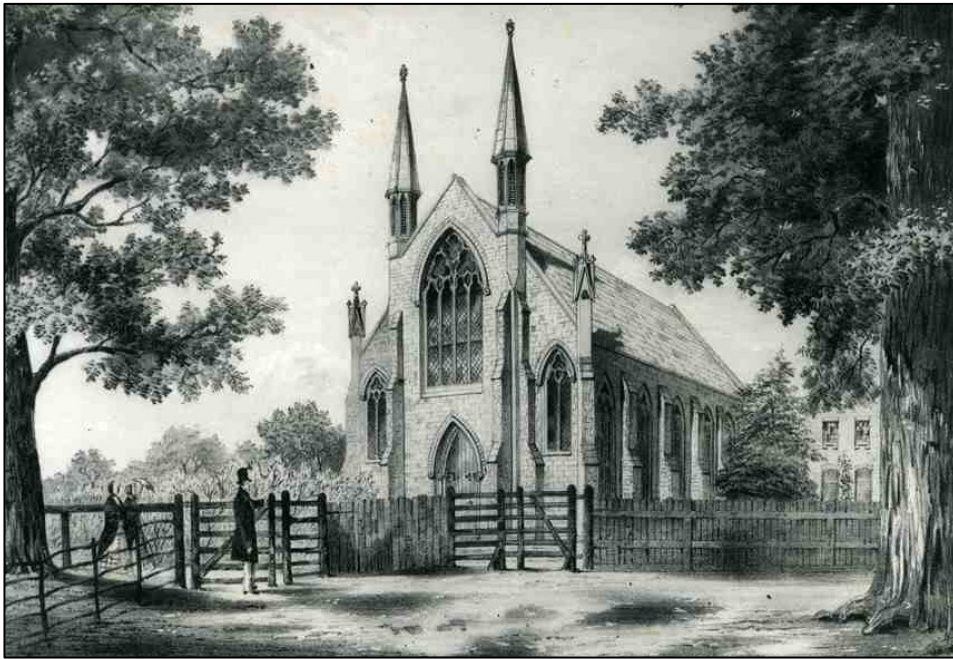


**Now**



## Park Baptist Chapel, SE corner of junction A4 and Boston Manor Road

**Then** (circa 1860)  
Demolished 1990



**Now**





## Goddards Corner

**Then** (circa 1905)



**Now**



## Wilson and Kyle, Catherine Wheel Road/High Street

**Then** (circa 1995)



**Now** (to be demolished)



## 81 High Street

**Then** (circa 1995)



**Now**



***The Seven Stars, 32 Half Acre***  
(opposite entrance to The Butts)

**Then** (circa 1890)



**Now**



## The Brentford Fountain

**Then** (circa 1885)

Opened 1877 between *The Express* and Kew Bridge



**Now**

On a road verge at Western International Market, Hayes



## New Grove Mansions, Boston Manor Road

**Then** (circa 1960)  
Built circa 1795



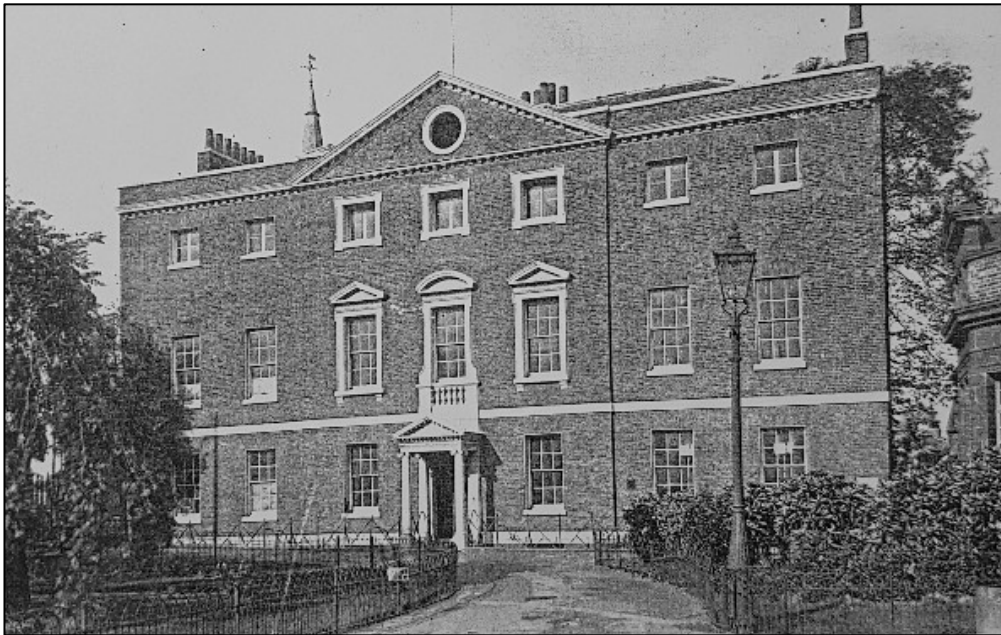
**Now**



**Grove House (later Clifden House), corner Clifden Road/Boston Manor Road**

**Then** (circa 1910)  
Built circa 1750-1760

**Now**



## Wesleyan Chapel, corner Clifden Road/Windmill Road

**Then** (circa 1910)



**Now**





## Brentford Baths, Clifden Road

**Then** (1896)



**Now**



## *The Three Pigeons, Market Place*

**Then** (circa 1905)



**Now**



## Grand Junction Water Company Drinking Fountain, St. Lawrence's Church

**Then** (circa 1960)  
Erected circa 1862



**Now**



## The Lucozade Sign, Great West Road

**Then** (circa 1970)

This was the second sign – the first read  
“Lucozade Aids Recovery”



**Now**



***The Red Lion, east corner of Ealing Road and High Street***

**Then** (circa 1969)  
Legendary music venue



**Now**



*The Red Lion, west corner of Ealing Road and High Street*

**Then** (circa 1950s)



**Now**



## The Great West Café, Boston Park Road

**Then** (circa 1955)



**Now**



## Sarah Trimmer's School Room, 367 High Street

**Then** (circa 1990s)  
Built 1806



**Now**

Much altered and damaged externally and internally





## Rattenbury's shop and pawnbrokers, 288 and 289 High Street

**Then** (1960s)  
Closed 1968



**Now**

Old shop front now at Museum of London



## *The Star and Garter, Kew Bridge Road*

**Then** (circa 1910)



**Now**

Now converted to flats

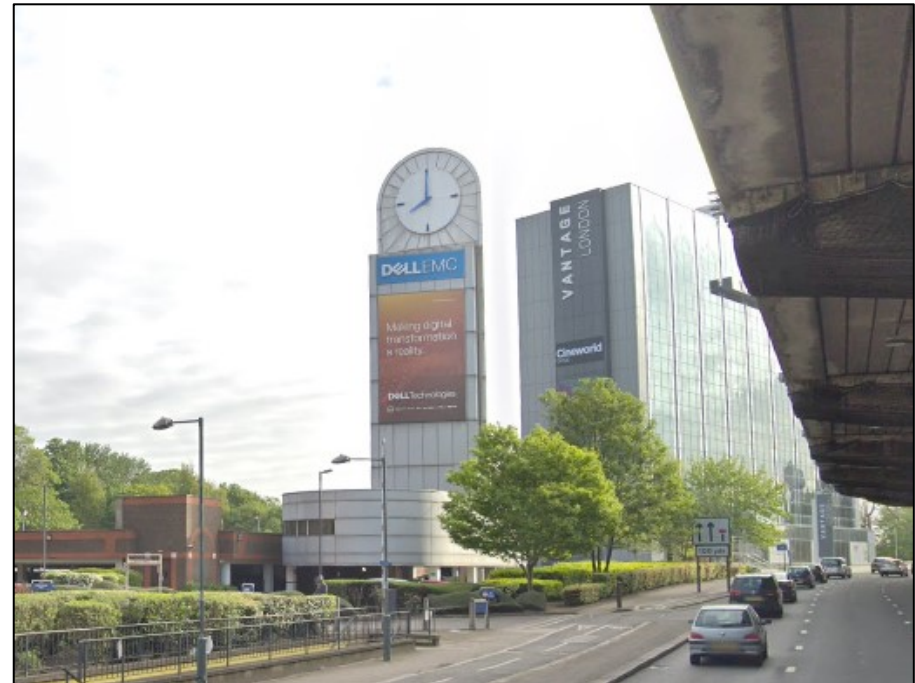


**Henly's garage and car showroom (later a warehouse for Martini), Great West Road**

**Then** (1937)



**Now**



## St. Lawrence's Church - interior

**Then** (early 1900s)



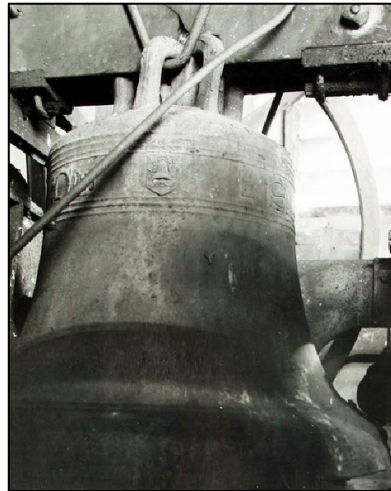
**Now** (2015)



# St. Lawrence's Church – interior (some of many monuments and fittings)

Then (early 1930s)

Now ?????????



## The Station House, Brentford Station

**Then** (1906)



**Now**



***The Duke of York*** (later the New England), **between Great West Road and York Road**

**Then** (1938)



**Now**



## Hudson Essex Motor Works, Great West Road

**Then** (1930s)



**Now**  
(B&Q)





## St. George's Church and the gasworks, High Street

**Then** (1960)



**Now**



## “Noy’s House” (adjacent to St Lawrence’s Vicarage), High Street

**Then** (circa 1885)

Probably a Tudor building: demolished 1889



**Now**



## Old Post Office, north corner of St. Paul's Road and Half Acre

**Then** (1960)

Moved here from Market Place in 1908. Closed 1960.



**Now**



## Brentford Market façade (now Fountain Leisure Centre)

**Then** (1960)

Built 1905



**Now**



**Cromwell Place** (at junction of Back Lane and St. Paul's Road)

**Then** (1893)



**Now**

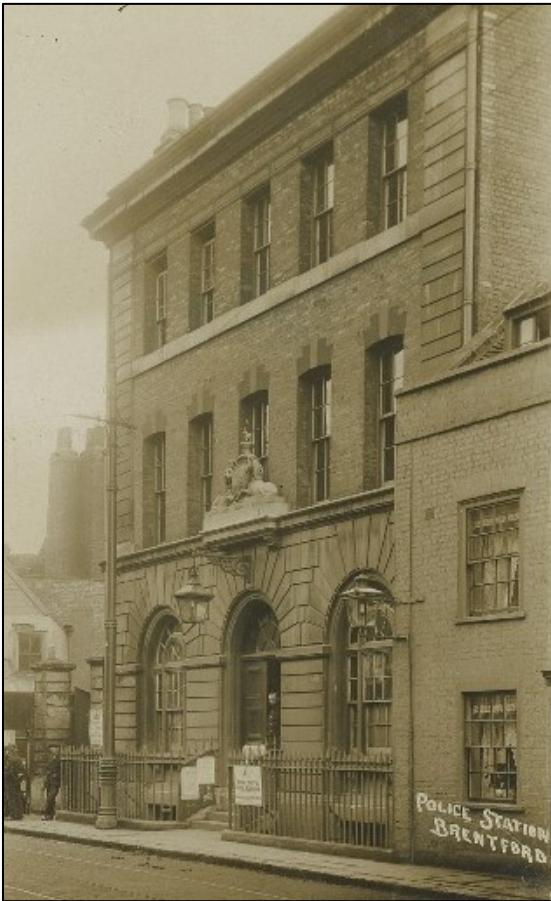


## The second Brentford Police Station, 42 High Street

(The first Police Station was at 60 High Street, on the corner of Town Meadow Road)

**Then** (1893)

Opened 1870, demolished 1969



**Now**



***The Bunch of Grapes* (aka *The Ferry Hotel*), Ferry Lane**

**Then** (circa 1907)

Built circa 1880. Pub closed in 1922. Demolished in 1983.

**Now**



**Photo credits:**

**Brentford High Street Project**

*Brentford Then and Now.* Carolyn and Peter Hammond (Tempus, 2006)

*The History of the Great West Road.* James Marshall (Heritage Publications, Hounslow Leisure Services (1995)

*Brentford Past.* Gillian Clegg (Historical Publications Ltd., 2002)

*Brentford: The Archive Photo Series.* Carolyn and Peter Hammond (Tempus, 1996)

*Chiswick and Brentford in Old Photographs.* Patrick Loobey (Sutton Publishing Ltd. 1997)

<http://www.towntoremember.brentfordcommunity.org.uk/photos.htm>

**Google Street View**

**Jim Storrar  
September 2019**